

CQE inserts

Special voltages

When all the contacts are used, the CQE inserts series connectors may be used at rated voltage up to 500V (first column) pollution degree 3, in accordance with the standard EN 61984.

If the number of contacts is reduced and the contacts accordingly assigned, these connectors may be used with higher voltages.

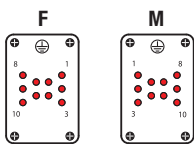
This is possible because the decrease in the number of contacts leads to an increase in the surface insulation distance in the air.

When the contacts are arranged as shown below, the inserts may be used at rated voltages of 690V (second column) and 1000V (third column) pollution degree 3, in accordance with the standard EN 61984.

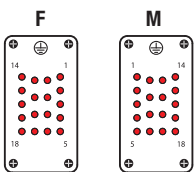
for use up to 500V
pollution degree 3

diagrams
contacts side (front view)

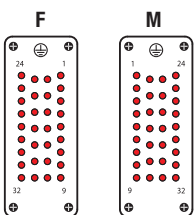
CQE - 10 + ⊕



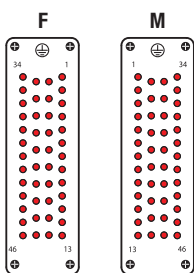
CQE - 18 + ⊕



CQE - 32 + ⊕



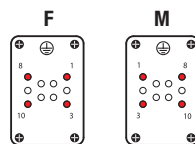
CQE - 46 + ⊕



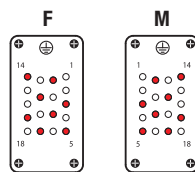
for use up to 690V
pollution degree 3

diagrams
contacts side (front view)

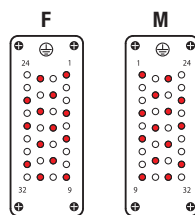
CQE - 4 + ⊕



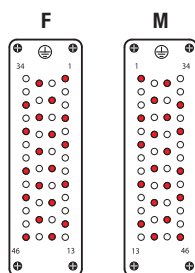
CQE - 8 + ⊕



CQE - 14 + ⊕



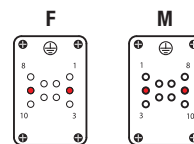
CQE - 20 + ⊕



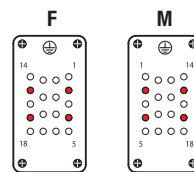
for use up to 1000V
pollution degree 3

diagrams
contacts side (front view)

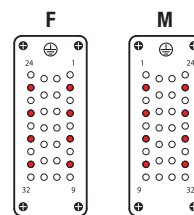
CQE - 2 + ⊕



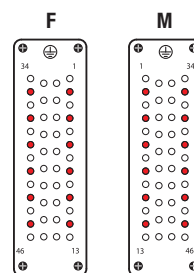
CQE - 4 + ⊕



CQE - 8 + ⊕



CQE - 12 + ⊕



Legend:

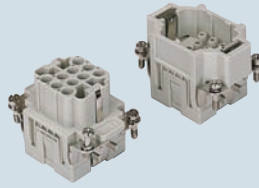
- working contact
- without contact
- M = male insert
- F = female insert

enclosures:
size "44.27" page:

C-TYPE IP65/IP66 240 - 243
C7 IP67, single lever 274
V-TYPE IP65/IP66, single lever 280/284 - 286
BIG hoods 304 - 306
T-TYPE IP65 insulating 326 - 327
T-TYPE / W IP66 insulating 336 - 337
HYGIENIC T-TYPE / H IP66/IP69 350 - 351
HYGIENIC T-TYPE / C IP66/IP69, -50 °C 358 - 359
W-TYPE for aggressive environments 373
EMC 392
central lever 404 - 405
IP68 420 - 423
LS-TYPE 450 - 451

panel supports: page:
COB 462 - 463

inserts, crimp connections



16A crimp contacts normal and for advanced opening silver and gold plated

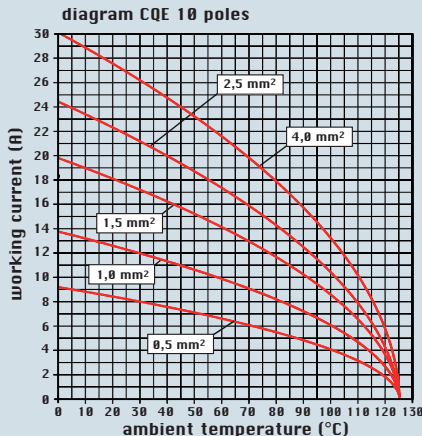


| description | part No. | part No. | part No. |
|--|----------------------------------|--|--|
| without contacts (to be ordered separately) female inserts for female contacts male inserts for male contacts | CQEF 10 CQEM 10 | | |
| 16A female contacts 0,14-0,37 mm ² AWG 26-22 three grooves 0,5 mm ² AWG 20 with no grooves 0,75 mm ² AWG 18 one groove (back side) 1 mm ² AWG 18 one groove 1,5 mm ² AWG 16 two grooves 2,5 mm ² AWG 14 three grooves 3 mm ² AWG 12 one wide groove 4 mm ² AWG 12 with no grooves | | CCFA 0.3 CCFA 0.5 CCFA 0.7 CCFA 1.0 CCFA 1.5 CCFA 2.5 CCFA 3.0 CCFA 4.0 | CCFD 0.3 CCFD 0.5 CCFD 0.7 CCFD 1.0 CCFD 1.5 CCFD 2.5 CCFD 3.0 CCFD 4.0 |
| 16A male contacts 0,14-0,37 mm ² AWG 26-22 three grooves 0,5 mm ² AWG 20 with no grooves 0,75 mm ² AWG 18 one groove (back side) 1 mm ² AWG 18 one groove 1,5 mm ² AWG 16 two grooves 2,5 mm ² AWG 14 three grooves 3 mm ² AWG 12 one wide groove 4 mm ² AWG 12 with no grooves | | CCMA 0.3 CCMA 0.5 CCMA 0.7 CCMA 1.0 CCMA 1.5 CCMA 2.5 CCMA 3.0 CCMA 4.0 | CCMD 0.3 CCMD 0.5 CCMD 0.7 CCMD 1.0 CCMD 1.5 CCMD 2.5 CCMD 3.0 CCMD 4.0 |
| 16A male crimp contacts for advanced opening 0,5 mm ² AWG 20 with no grooves 0,75 mm ² AWG 18 one groove (back side) 1 mm ² AWG 18 one groove 1,5 mm ² AWG 16 two grooves 2,5 mm ² AWG 14 three grooves | | CC 0.5 AN CC 0.7 AN CC 1.0 AN CC 1.5 AN CC 2.5 AN | |

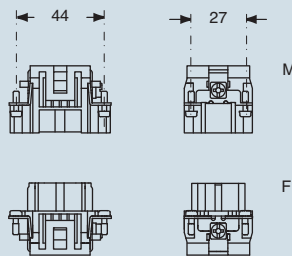
silver plated

gold plated 1)

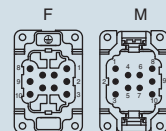
- characteristics according to EN 61984:
16A 500V 6kV 3
16A 830V 8kV 2
- cUL - UL for USA and Canada, CSA, GL, EAC certified
- rated voltage according to UL/CSA: 600V
- insulation resistance: ≥ 10 GΩ
- ambient temperature limit: -40 °C ... +125 °C
- are made of self-extinguishing thermoplastic resin UL 94 V0
- mechanical life: ≥ 500 cycles
- contact resistance: ≤ 1 mΩ
- for maximum current load, see the following load curves inserts, for more information see page 561



dimensions in mm

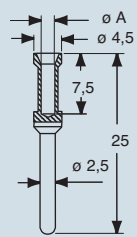


contacts side (front view)

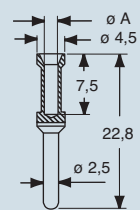


dimensions in mm

CCF and CCM



CC...AN



CCF, CCM and CC...AN contacts

| conductor section | conductor slot | conductors stripping length |
|-------------------|----------------|-----------------------------|
| mm ² | ø A (mm) | (mm) |
| 0,14-0,37 | 0,9 | 7,5 |
| 0,5 | 1,1 | 7,5 |
| 0,75 | 1,3 | 7,5 |
| 1,0 | 1,45 | 7,5 |
| 1,5 | 1,8 | 7,5 |
| 2,5 | 2,2 | 7,5 |
| 3 | 2,55 | 7,5 |
| 4 | 2,85 | 7,5 |

1) basic or high thickness gold plating page 481

- for contact crimping instructions, please see the crimping tool section (16A contacts, CCF, CCM and CC...AN series) on pages 534, 538, 544, 546, 548

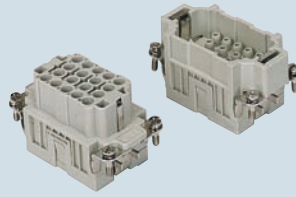
dimensions shown are not binding and may be changed without notice

enclosures:
size "57.27" page:

C-TYPE IP65/IP66 244 - 249
 C7 IP67, two levers 275
 V-TYPE IP65/IP66, single lever 281/288 - 291
 BIG hoods 308 - 311
 T-TYPE IP65 insulating 328 - 329
 T-TYPE / W IP66 insulating 338 - 339
 HYGIENIC T-TYPE / H IP66/IP69 352 - 353
 HYGIENIC T-TYPE / C IP66/IP69, -50 °C 360 - 361
 W-TYPE for aggressive environments 374
 EMC 393
 central lever 406 - 407
 IP68 424 - 427
 LS-TYPE 452 - 453

panel supports: page:
COB 462 - 463

inserts, crimp connections

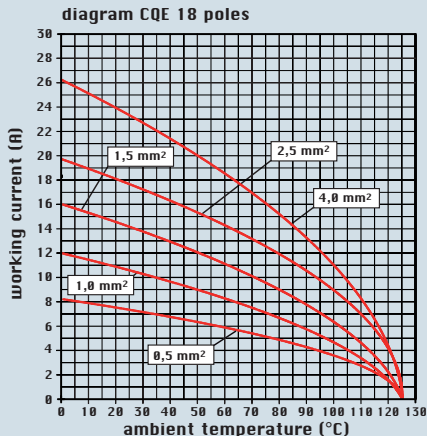


16A crimp contacts normal and for advanced opening silver and gold plated

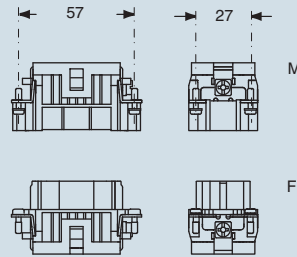


| description | part No. | part No. | part No. |
|---|----------------------------------|--|--|
| without contacts (to be ordered separately) female inserts for female contacts male inserts for male contacts | CQEF 18 CQEM 18 | | |
| 16A female contacts 0,14-0,37 mm ² AWG 26-22 three grooves 0,5 mm ² AWG 20 with no grooves 0,75 mm ² AWG 18 one groove (back side) 1 mm ² AWG 18 one groove 1,5 mm ² AWG 16 two grooves 2,5 mm ² AWG 14 three grooves 3 mm ² AWG 12 one wide groove 4 mm ² AWG 12 with no grooves | | silver plated | gold plated 1) |
| 16A male contacts 0,14-0,37 mm ² AWG 26-22 three grooves 0,5 mm ² AWG 20 with no grooves 0,75 mm ² AWG 18 one groove (back side) 1 mm ² AWG 18 one groove 1,5 mm ² AWG 16 two grooves 2,5 mm ² AWG 14 three grooves 3 mm ² AWG 12 one wide groove 4 mm ² AWG 12 with no grooves | | | |
| 16A male crimp contacts for advanced opening 0,5 mm ² AWG 20 with no grooves 0,75 mm ² AWG 18 one groove (back side) 1 mm ² AWG 18 one groove 1,5 mm ² AWG 16 two grooves 2,5 mm ² AWG 14 three grooves | | | |
| | | CCFA 0.3 CCFA 0.5 CCFA 0.7 CCFA 1.0 CCFA 1.5 CCFA 2.5 CCFA 3.0 CCFA 4.0 | CCFD 0.3 CCFD 0.5 CCFD 0.7 CCFD 1.0 CCFD 1.5 CCFD 2.5 CCFD 3.0 CCFD 4.0 |
| | | CCMA 0.3 CCMA 0.5 CCMA 0.7 CCMA 1.0 CCMA 1.5 CCMA 2.5 CCMA 3.0 CCMA 4.0 | CCMD 0.3 CCMD 0.5 CCMD 0.7 CCMD 1.0 CCMD 1.5 CCMD 2.5 CCMD 3.0 CCMD 4.0 |
| | | CC 0.5 AN CC 0.7 AN CC 1.0 AN CC 1.5 AN CC 2.5 AN | |

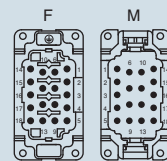
- characteristics according to EN 61984:
16A 500V 6kV 3
16A 830V 8kV 2
- cUL - UL for USA and Canada, CSA, GL, EAC certified
- rated voltage according to UL/CSA: 600V
- insulation resistance: ≥ 10 GΩ
- ambient temperature limit: -40 °C ... +125 °C
- are made of self-extinguishing thermoplastic resin UL 94 V0
- mechanical life: ≥ 500 cycles
- contact resistance: ≤ 1 mΩ
- for maximum current load, see the following load curves inserts, for more information see page 561



dimensions in mm

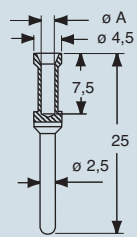


contacts side (front view)

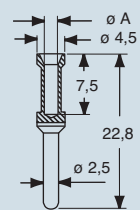


dimensions in mm

CCF and CCM



CC...AN



CCF, CCM and CC...AN contacts

| conductor section | conductor slot | conductors stripping length |
|-------------------|----------------|-----------------------------|
| mm ² | ø A (mm) | (mm) |
| 0,14-0,37 | 0,9 | 7,5 |
| 0,5 | 1,1 | 7,5 |
| 0,75 | 1,3 | 7,5 |
| 1,0 | 1,45 | 7,5 |
| 1,5 | 1,8 | 7,5 |
| 2,5 | 2,2 | 7,5 |
| 3 | 2,55 | 7,5 |
| 4 | 2,85 | 7,5 |

1) basic or high thickness gold plating page 481

- for contact crimping instructions, please see the crimping tool section (16A contacts, CCF, CCM and CC...AN series) on pages 534, 538, 544, 546, 548

enclosures:
size "77.27" page:

| | |
|---|---------------|
| C-TYPE IP65/IP66 | 250 - 256 |
| C7 IP67, two levers | 276 |
| V-TYPE IP65/IP66, single lever | 282/292 - 295 |
| BIG hoods | 312 - 315 |
| T-TYPE IP65 insulating | 330 - 331 |
| T-TYPE / W IP66 insulating | 340 - 341 |
| HYGIENIC T-TYPE / H IP66/IP69 | 354 - 355 |
| HYGIENIC T-TYPE / C IP66/IP69, -50 °C | 362 - 363 |
| W-TYPE for aggressive environments | 375 |
| EMC | 394 |
| central lever | 408 - 409 |
| IP68 | 428 - 431 |
| LS-TYPE | 454 - 455 |

panel supports: page:
COB

description

without contacts (to be ordered separately)
female inserts for female contacts
male inserts for male contacts

16A female contacts

| | | |
|---------------------------|-----------|------------------------|
| 0,14-0,37 mm ² | AWG 26-22 | three grooves |
| 0,5 mm ² | AWG 20 | with no grooves |
| 0,75 mm ² | AWG 18 | one groove (back side) |
| 1 mm ² | AWG 18 | one groove |
| 1,5 mm ² | AWG 16 | two grooves |
| 2,5 mm ² | AWG 14 | three grooves |
| 3 mm ² | AWG 12 | one wide groove |
| 4 mm ² | AWG 12 | with no grooves |

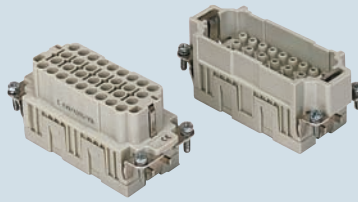
16A male contacts

| | | |
|---------------------------|-----------|------------------------|
| 0,14-0,37 mm ² | AWG 26-22 | three grooves |
| 0,5 mm ² | AWG 20 | with no grooves |
| 0,75 mm ² | AWG 18 | one groove (back side) |
| 1 mm ² | AWG 18 | one groove |
| 1,5 mm ² | AWG 16 | two grooves |
| 2,5 mm ² | AWG 14 | three grooves |
| 3 mm ² | AWG 12 | one wide groove |
| 4 mm ² | AWG 12 | with no grooves |

16A male crimp contacts for advanced opening

| | | |
|----------------------|--------|------------------------|
| 0,5 mm ² | AWG 20 | with no grooves |
| 0,75 mm ² | AWG 18 | one groove (back side) |
| 1 mm ² | AWG 18 | one groove |
| 1,5 mm ² | AWG 16 | two grooves |
| 2,5 mm ² | AWG 14 | three grooves |

inserts, crimp connections



part No.

CQEF 32
CQEM 32

16A crimp contacts normal and for advanced opening silver and gold plated



part No.

part No.

CCFA 0.3
CCFA 0.5
CCFA 0.7
CCFA 1.0
CCFA 1.5
CCFA 2.5
CCFA 3.0
CCFA 4.0

silver plated

CCFD 0.3
CCFD 0.5
CCFD 0.7
CCFD 1.0
CCFD 1.5
CCFD 2.5
CCFD 3.0
CCFD 4.0

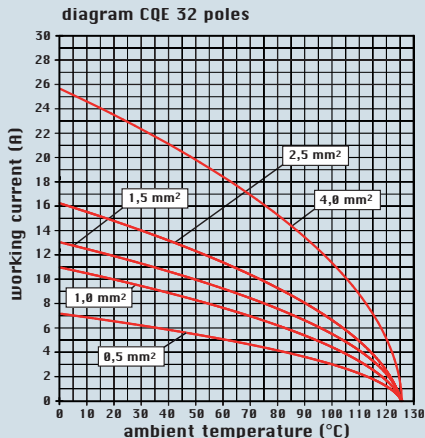
gold plated 1)

CCMA 0.3
CCMA 0.5
CCMA 0.7
CCMA 1.0
CCMA 1.5
CCMA 2.5
CCMA 3.0
CCMA 4.0

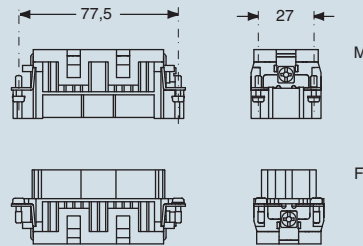
CCMD 0.3
CCMD 0.5
CCMD 0.7
CCMD 1.0
CCMD 1.5
CCMD 2.5
CCMD 3.0
CCMD 4.0

CC 0.5 AN
CC 0.7 AN
CC 1.0 AN
CC 1.5 AN
CC 2.5 AN

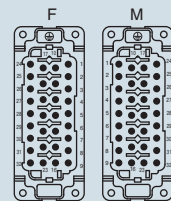
- characteristics according to EN 61984:
16A 500V 6kV 3
16A 830V 8kV 2
- cUL - UL for USA and Canada, CSA, GL, EAC certified
- rated voltage according to UL/CSA: 600V
- insulation resistance: ≥ 10 GΩ
- ambient temperature limit: -40 °C ... +125 °C
- are made of self-extinguishing thermoplastic resin UL 94 V0
- mechanical life: ≥ 500 cycles
- contact resistance: ≤ 1 mΩ
- for maximum current load, see the following load curves inserts, for more information see page 561



dimensions in mm

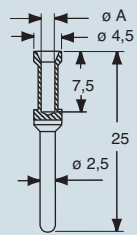


contacts side (front view)

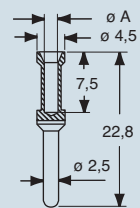


dimensions in mm

CCF and CCM



CC...AN



CCF, CCM and CC...AN contacts

| conductor section | conductor slot | conductors stripping length |
|-------------------|----------------|-----------------------------|
| mm ² | ø A (mm) | (mm) |
| 0,14-0,37 | 0,9 | 7,5 |
| 0,5 | 1,1 | 7,5 |
| 0,75 | 1,3 | 7,5 |
| 1,0 | 1,45 | 7,5 |
| 1,5 | 1,8 | 7,5 |
| 2,5 | 2,2 | 7,5 |
| 3 | 2,55 | 7,5 |
| 4 | 2,85 | 7,5 |

1) basic or high thickness gold plating page 481

- for contact crimping instructions, please see the crimping tool section (16A contacts, CCF, CCM and CC...AN series) on pages 534, 538, 544, 546, 548

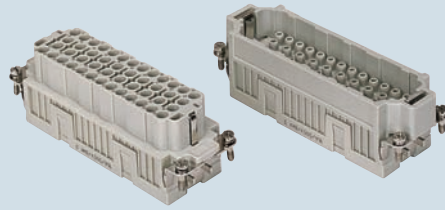
dimensions shown are not binding and may be changed without notice

enclosures:
size "104.27" page:

C-TYPE IP65/IP66 258 - 266
C7 IP67, two levers 277
V-TYPE IP65/IP66, single lever 283/296 - 299
BIG hoods 316 - 319
T-TYPE IP65 insulating 332 - 333
T-TYPE / W IP66 insulating 342 - 343
HYGIENIC T-TYPE / H IP66/IP69 356 - 357
HYGIENIC T-TYPE / C IP66/IP69, -50 °C 364 - 365
W-TYPE for aggressive environments 376
EMC 395
central lever 410 - 412
IP68 432 - 435
LS-TYPE 456 - 457

panel supports: page:
COB 462 - 463

inserts, crimp connections

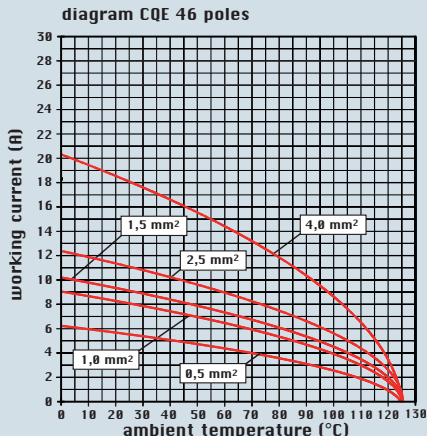


16A crimp contacts normal and for advanced opening silver and gold plated

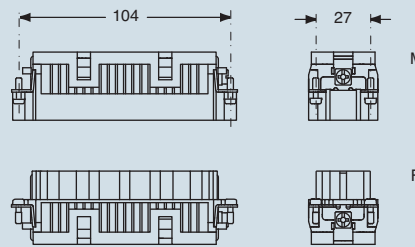


| description | part No. | part No. | part No. |
|--|----------------------------------|--|--|
| without contacts (to be ordered separately) female inserts for female contacts male inserts for male contacts | CQEF 46 CQEM 46 | | |
| 16A female contacts 0,14-0,37 mm ² AWG 26-22 three grooves 0,5 mm ² AWG 20 with no grooves 0,75 mm ² AWG 18 one groove (back side) 1 mm ² AWG 18 one groove 1,5 mm ² AWG 16 two grooves 2,5 mm ² AWG 14 three grooves 3 mm ² AWG 12 one wide groove 4 mm ² AWG 12 with no grooves | | CCFA 0.3 CCFA 0.5 CCFA 0.7 CCFA 1.0 CCFA 1.5 CCFA 2.5 CCFA 3.0 CCFA 4.0 | CCFD 0.3 CCFD 0.5 CCFD 0.7 CCFD 1.0 CCFD 1.5 CCFD 2.5 CCFD 3.0 CCFD 4.0 |
| 16A male contacts 0,14-0,37 mm ² AWG 26-22 three grooves 0,5 mm ² AWG 20 with no grooves 0,75 mm ² AWG 18 one groove (back side) 1 mm ² AWG 18 one groove 1,5 mm ² AWG 16 two grooves 2,5 mm ² AWG 14 three grooves 3 mm ² AWG 12 one wide groove 4 mm ² AWG 12 with no grooves | | CCMA 0.3 CCMA 0.5 CCMA 0.7 CCMA 1.0 CCMA 1.5 CCMA 2.5 CCMA 3.0 CCMA 4.0 | CCMD 0.3 CCMD 0.5 CCMD 0.7 CCMD 1.0 CCMD 1.5 CCMD 2.5 CCMD 3.0 CCMD 4.0 |
| 16A male crimp contacts for advanced opening 0,5 mm ² AWG 20 with no grooves 0,75 mm ² AWG 18 one groove (back side) 1 mm ² AWG 18 one groove 1,5 mm ² AWG 16 two grooves 2,5 mm ² AWG 14 three grooves | | CC 0.5 AN CC 0.7 AN CC 1.0 AN CC 1.5 AN CC 2.5 AN | |

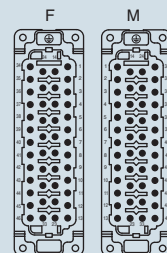
- characteristics according to EN 61984:
16A 500V 6kV 3
16A 830V 8kV 2
- cUL - UL for USA and Canada, CSA, GL, EAC certified
- rated voltage according to UL/CSA: 600V
- insulation resistance: ≥ 10 GΩ
- ambient temperature limit: -40 °C ... +125 °C
- are made of self-extinguishing thermoplastic resin UL 94 V0
- mechanical life: ≥ 500 cycles
- contact resistance: ≤ 1 mΩ
- for maximum current load, see the following load curves inserts, for more information see page 561



dimensions in mm



contacts side (front view)



dimensions in mm

| CCF and CCM | | CC...AN | |
|-------------------------------------|----------------|-----------------------------|--|
| | | | |
| CCF, CCM and CC..AN contacts | | | |
| conductor section | conductor slot | conductors stripping length | |
| mm ² | ø A (mm) | (mm) | |
| 0,14-0,37 | 0,9 | 7,5 | |
| 0,5 | 1,1 | 7,5 | |
| 0,75 | 1,3 | 7,5 | |
| 1,0 | 1,45 | 7,5 | |
| 1,5 | 1,8 | 7,5 | |
| 2,5 | 2,2 | 7,5 | |
| 3 | 2,55 | 7,5 | |
| 4 | 2,85 | 7,5 | |

1) basic or high thickness gold plating page 481

- for contact crimping instructions, please see the crimping tool section (16A contacts, CCF, CCM and CC...AN series) on pages 534, 538, 544, 546, 548

enclosures:
size "77.62"

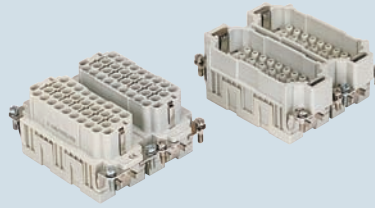
page:

C-TYPE IP65/IP66 267 - 270

W-TYPE for aggressive environments 377

- for contact crimping instructions, please see the crimping tool section (16A contacts, CCF, CCM and CC...AN series) on pages 534, 538, 544, 546, 548

inserts, crimp connections



16A crimp contacts normal and for advanced opening silver and gold plated

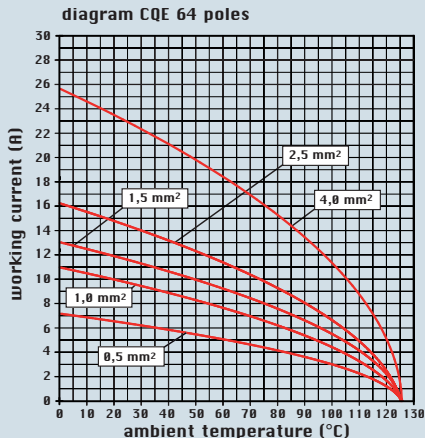


| description | part No. | part No. | part No. | part No. |
|---|----------------------------------|--------------------------------------|--|--|
| without contacts (to be ordered separately) female inserts, No. (1-32) and (33-64) male inserts, No. (1-32) and (33-64) | CQEF 32 CQEM 32 | CQEF 32 N CQEM 32 N | | |
| 16A female contacts 0,14-0,37 mm ² AWG 26-22 three grooves 0,5 mm ² AWG 20 with no grooves 0,75 mm ² AWG 18 one groove (back side) 1 mm ² AWG 18 one groove 1,5 mm ² AWG 16 two grooves 2,5 mm ² AWG 14 three grooves 3 mm ² AWG 12 one wide groove 4 mm ² AWG 12 with no grooves | | | CCFA 0.3 CCFA 0.5 CCFA 0.7 CCFA 1.0 CCFA 1.5 CCFA 2.5 CCFA 3.0 CCFA 4.0 | CCFD 0.3 CCFD 0.5 CCFD 0.7 CCFD 1.0 CCFD 1.5 CCFD 2.5 CCFD 3.0 CCFD 4.0 |
| 16A male contacts 0,14-0,37 mm ² AWG 26-22 three grooves 0,5 mm ² AWG 20 with no grooves 0,75 mm ² AWG 18 one groove (back side) 1 mm ² AWG 18 one groove 1,5 mm ² AWG 16 two grooves 2,5 mm ² AWG 14 three grooves 3 mm ² AWG 12 one wide groove 4 mm ² AWG 12 with no grooves | | | CCMA 0.3 CCMA 0.5 CCMA 0.7 CCMA 1.0 CCMA 1.5 CCMA 2.5 CCMA 3.0 CCMA 4.0 | CCMD 0.3 CCMD 0.5 CCMD 0.7 CCMD 1.0 CCMD 1.5 CCMD 2.5 CCMD 3.0 CCMD 4.0 |
| 16A male crimp contacts for advanced opening 0,5 mm ² AWG 20 with no grooves 0,75 mm ² AWG 18 one groove (back side) 1 mm ² AWG 18 one groove 1,5 mm ² AWG 16 two grooves 2,5 mm ² AWG 14 three grooves | | | CC 0.5 AN CC 0.7 AN CC 1.0 AN CC 1.5 AN CC 2.5 AN | |

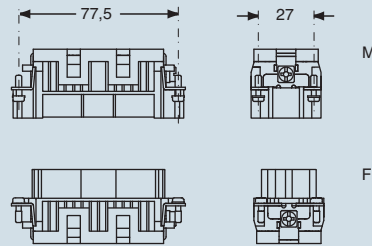
silver plated

gold plated 1)

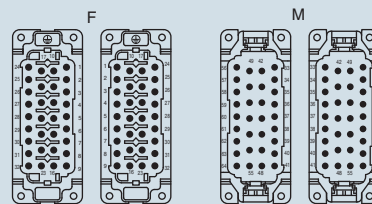
- characteristics according to EN 61984:
16A 500V 6kV 3
16A 830V 8kV 2
- cUL - UL for USA and Canada, CSA, GL, EAC certified
- rated voltage according to UL/CSA: 600V
- insulation resistance: ≥ 10 GΩ
- ambient temperature limit: -40 °C ... +125 °C
- are made of self-extinguishing thermoplastic resin UL 94 V0
- mechanical life: ≥ 500 cycles
- contact resistance: ≤ 1 mΩ
- for maximum current load, see the following load curves inserts, for more information see page 561



dimensions in mm

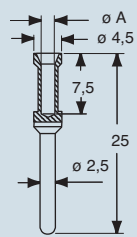


contacts side (front view)

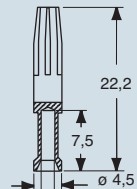
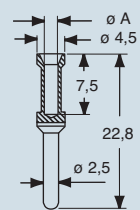


dimensions in mm

CCF and CCM



CC...AN



CCF, CCM and CC...AN contacts

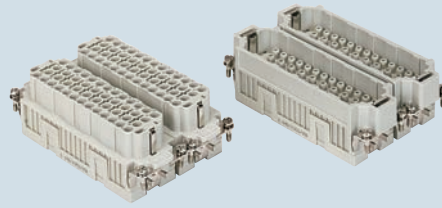
| conductor section | conductor slot | conductors stripping length |
|-------------------|----------------|-----------------------------|
| mm ² | ø A (mm) | (mm) |
| 0,14-0,37 | 0,9 | 7,5 |
| 0,5 | 1,1 | 7,5 |
| 0,75 | 1,3 | 7,5 |
| 1,0 | 1,45 | 7,5 |
| 1,5 | 1,8 | 7,5 |
| 2,5 | 2,2 | 7,5 |
| 3 | 2,55 | 7,5 |
| 4 | 2,85 | 7,5 |

1) basic or high thickness gold plating page 481

dimensions shown are not binding and may be changed without notice

enclosures:
size "104.62" page:
C-TYPE IP65/IP66..... 271
W-TYPE for aggressive environments 378

inserts, crimp connections



16A crimp contacts normal and for advanced opening silver and gold plated



- for contact crimping instructions, please see the crimping tool section (16A contacts, CCF, CCM and CC...AN series) on pages 534, 538, 544, 546, 548

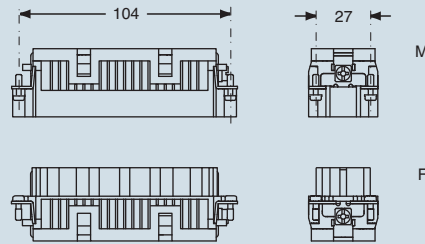
| description | part No. | part No. | part No. | part No. |
|--|----------------------------------|--------------------------------------|--|--|
| without contacts (to be ordered separately) female inserts, No. (1-46) and (47-92) male inserts, No. (1-46) and (47-92) | CQEF 46 CQEM 46 | CQEF 46 N CQEM 46 N | | |
| 16A female contacts 0,14-0,37 mm ² AWG 26-22 three grooves 0,5 mm ² AWG 20 with no grooves 0,75 mm ² AWG 18 one groove (back side) 1 mm ² AWG 18 one groove 1,5 mm ² AWG 16 two grooves 2,5 mm ² AWG 14 three grooves 3 mm ² AWG 12 one wide groove 4 mm ² AWG 12 with no grooves | | | CCFA 0.3 CCFA 0.5 CCFA 0.7 CCFA 1.0 CCFA 1.5 CCFA 2.5 CCFA 3.0 CCFA 4.0 | CCFD 0.3 CCFD 0.5 CCFD 0.7 CCFD 1.0 CCFD 1.5 CCFD 2.5 CCFD 3.0 CCFD 4.0 |
| 16A male contacts 0,14-0,37 mm ² AWG 26-22 three grooves 0,5 mm ² AWG 20 with no grooves 0,75 mm ² AWG 18 one groove (back side) 1 mm ² AWG 18 one groove 1,5 mm ² AWG 16 two grooves 2,5 mm ² AWG 14 three grooves 3 mm ² AWG 12 one wide groove 4 mm ² AWG 12 with no grooves | | | CCMA 0.3 CCMA 0.5 CCMA 0.7 CCMA 1.0 CCMA 1.5 CCMA 2.5 CCMA 3.0 CCMA 4.0 | CCMD 0.3 CCMD 0.5 CCMD 0.7 CCMD 1.0 CCMD 1.5 CCMD 2.5 CCMD 3.0 CCMD 4.0 |
| 16A male crimp contacts for advanced opening 0,5 mm ² AWG 20 with no grooves 0,75 mm ² AWG 18 one groove (back side) 1 mm ² AWG 18 one groove 1,5 mm ² AWG 16 two grooves 2,5 mm ² AWG 14 three grooves | | | CC 0.5 AN CC 0.7 AN CC 1.0 AN CC 1.5 AN CC 2.5 AN | |

silver plated

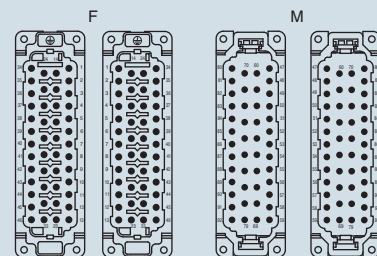
gold plated 1)

- characteristics according to EN 61984:
16A 500V 6kV 3
16A 830V 8kV 2
 - cUL - UL for USA and Canada, CSA, GL, EAC certified
 - rated voltage according to UL/CSA: 600V
 - insulation resistance: ≥ 10 GΩ
 - ambient temperature limit: -40 °C ... +125 °C
 - are made of self-extinguishing thermoplastic resin UL 94 V0
 - mechanical life: ≥ 500 cycles
 - contact resistance: ≤ 1 mΩ
 - for maximum current load, see the following load curves inserts, for more information see page 561

dimensions in mm

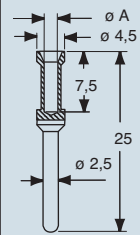


contacts side (front view)

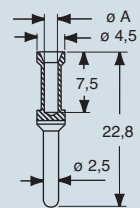


dimensions in mm

CCF and CCM



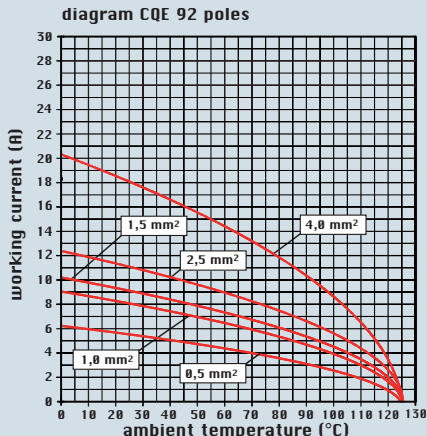
CC...AN



CCF, CCM and CC...AN contacts

| conductor section | conductor slot | conductors stripping length |
|-------------------|----------------|-----------------------------|
| mm ² | ø A (mm) | (mm) |
| 0,14-0,37 | 0,9 | 7,5 |
| 0,5 | 1,1 | 7,5 |
| 0,75 | 1,3 | 7,5 |
| 1,0 | 1,45 | 7,5 |
| 1,5 | 1,8 | 7,5 |
| 2,5 | 2,2 | 7,5 |
| 3 | 2,55 | 7,5 |
| 4 | 2,85 | 7,5 |

1) basic or high thickness gold plating page 481



dimensions shown are not binding and may be changed without notice

CQE