



inserts:	page:
CK ..... 3 poles + ⊕	48
CK ..... 4 poles + ⊕	48
CKS ..... 3 poles + ⊕	49
CKS ..... 4 poles + ⊕	49
CD ..... 7 poles + ⊕	53
CD ..... 8 poles	54
CQ ..... 12 poles + ⊕	165
CQ ..... 5 poles + ⊕	166

insert dimensions:  
21 x 21 mm

bulkhead mounting housings

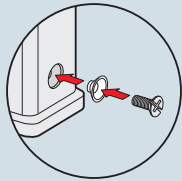


angled bulkhead mounting housings

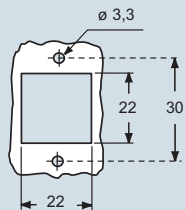


description	part No.		part No.	part No.
			(entry - Pg 11)	(entry - M 20)
with lever	<b>CK 03 I</b>	(white)		
with lever	<b>CK 03 IN</b>	(black)		
without cable entry, with lever			<b>CK 03 IA</b>	(white)
without cable entry, with lever			<b>CK 03 IAN</b>	(black)
with cable entry and lever			<b>CK 03 IAPS</b>	(white)
with cable entry and lever			<b>CK 03 IAPNS</b>	(black)
			<b>MK IAP20</b>	(white)
			<b>MK IAPN20</b>	(black)
gasket and screw kit for IP66/IP67 <sup>1)</sup> for CK, CQ 05, CKS inserts	<b>CKR 65</b>		<b>CKR 65</b>	
gasket and screw kit for IP66/IP67 <sup>1)</sup> for CD 07/08 inserts	<b>CKR 65 D</b>		<b>CKR 65 D</b>	

1) To obtain the protection rating IP66/IP67 a kit is provided that includes a gasket to fit under the insert fixing screws supplied with the kit (see illustrative example).  
CQ 12 inserts are already supplied with a gasket and screw which ensure IP66/IP67 protection rating.

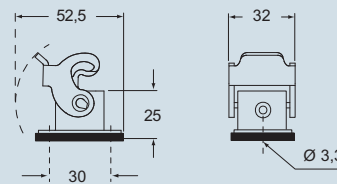


panel cut-out for enclosures, in mm



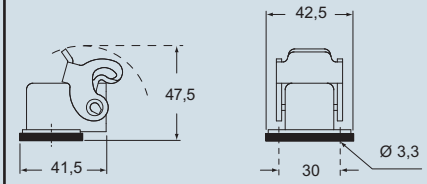
dimensions in mm

CK I(N)

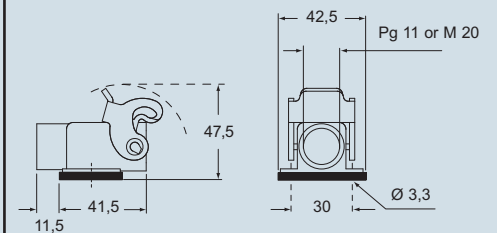


dimensions in mm

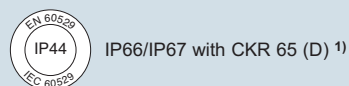
CK IA(N)



CK IAP(N)S and MK IAP(N)



**CRUS** Type 12  
Type 4/4X only  
with CKR 65 (D)



dimensions shown are not binding  
and may be changed without notice



inserts:	page:
CK ..... 3 poles + ⊕	48
CK ..... 4 poles + ⊕	48
CKS ..... 3 poles + ⊕	49
CKS ..... 4 poles + ⊕	49
CD ..... 7 poles + ⊕	53
CD ..... 8 poles	54
CQ ..... 12 poles + ⊕	165
CQ ..... 5 poles + ⊕	166

insert dimensions:  
21 x 21 mm

hoods

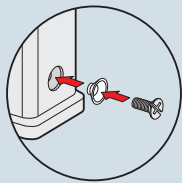


covers



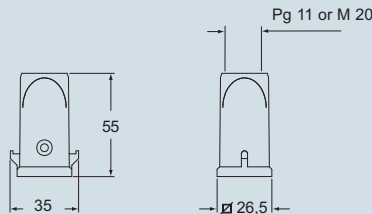
description	part No. (entry - Pg 11)	part No. (entry - M 20)	part No. (with eyelet)	part No. (with loop)
with pegs, top entry	<b>CK 03 VS</b> (white)	<b>MK V20</b> (white)		
with pegs, top entry	<b>CK 03 VNS</b> (black)	<b>MK VN20</b> (black)		
with pegs, side entry	<b>CK 03 VAS</b> (white)	<b>MK VA20</b> (white)		
with pegs, side entry	<b>CK 03 VANS</b> (black)	<b>MK VAN20</b> (black)		
with lever, top entry	<b>CK 03 VGS</b> (white)	<b>MK VG20</b> (white)		
with lever, top entry	<b>CK 03 VGNS</b> (black)	<b>MK VGN20</b> (black)		
with pegs and gasket, for female inserts			<b>CK 03 C</b> (white)	<b>CK 03 CS</b> (white)
with pegs and gasket, for female inserts			<b>CK 03 CN</b> (black)	
with pegs, for male inserts			<b>CK 03 CA</b> (white)	<b>CK 03 CAS</b> (white)
with pegs, for male inserts			<b>CK 03 CAN</b> (black)	
with lever and gasket, for female inserts				<b>CK 03 CX</b> (white)
with lever and gasket, for female inserts				<b>CK 03 CXN</b> (black)
with lever, for male inserts				<b>CK 03 CXA</b> (white)
with lever, for male inserts				<b>CK 03 CXAN</b> (black)
gasket and screw kit for IP66/IP67 <sup>1)</sup> for CK, CQ 05, CKS inserts	<b>CKR 65</b>			
gasket and screw kit for IP66/IP67 <sup>1)</sup> for CD 07/08 inserts	<b>CKR 65 D</b>			

1) To obtain the protection rating IP66/IP67 a kit is provided that includes a gasket to fit under the insert fixing screws supplied with the kit (see illustrative example).  
CQ 12 inserts are already supplied with a gasket and screw which ensure IP66/IP67 protection rating.

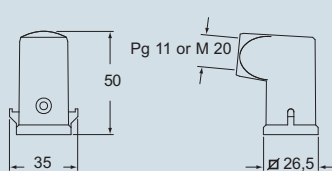


dimensions in mm

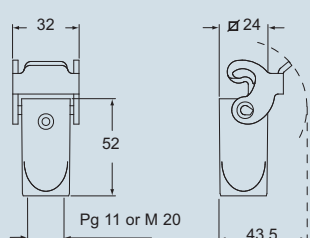
CK V(N)S and MK V(N)



CK VA(N)S and MK VA(N)

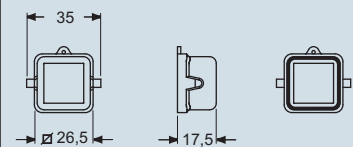


CK VG(N)S and MK VG(N)

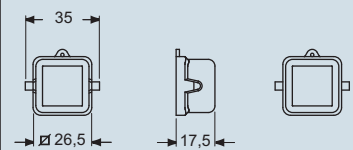


dimensions in mm

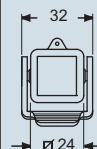
CK C(S)(N)



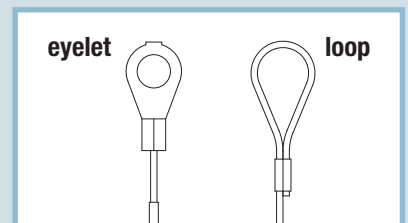
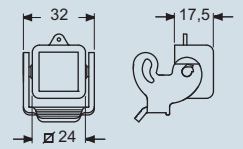
CK CA(S)(N)



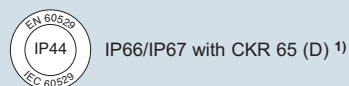
CK CX(N)



CK CXA(N)



**CRUS** Type 12  
Type 4/4X only  
with CKR 65 (D)



dimensions shown are not binding  
and may be changed without notice

C-TYPE - size 21.21



inserts:	page:
CK ..... 3 poles + ⊕	48
CK ..... 4 poles + ⊕	48
CKS ..... 3 poles + ⊕	49
CKS ..... 4 poles + ⊕	49
CD ..... 8 poles	54
CQ ..... 12 poles + ⊕	165
CQ ..... 5 poles + ⊕	166

insert dimensions:  
21 x 21 mm

bulkhead mounting housings

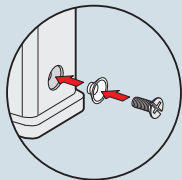


angled bulkhead mounting housings

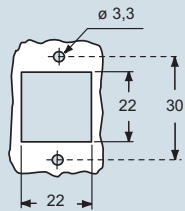


description	part No.	part No. (entry - Pg 11)	part No. (entry - M 20)
with galvanised steel lever with stainless steel lever	CKA 03 I CKAX 03 I		
without cable entry, galvanized steel lever without cable entry, stainless steel lever		CKA 03 IA CKAX 03 IA	
with cable entry, galvanized steel lever with cable entry, stainless steel lever with cable entry, galvanized steel lever, bulkhead hole closed with cable entry, stainless steel lever, bulkhead hole closed		CKA 03 IAPS CKAX 03 IAPS CKA 03 APS CKAX 03 APS	MKA IAP20 MKAX IAP20 MKA AP20 MKAX AP20
gasket and screw kit for IP66/IP67 <sup>1)</sup> for CK, CQ 05, CKS inserts	CKR 65	CKR 65	
gasket and screw kit for IP66/IP67 <sup>1)</sup> for CD 07/08 inserts	CKR 65 D	CKR 65 D	

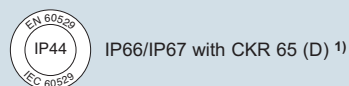
1) To obtain the protection rating IP66/IP67 a kit is provided that includes a gasket to fit under the insert fixing screws supplied with the kit (see illustrative example).  
CQ 12 inserts are already supplied with a gasket and screw which ensure IP66/IP67 protection rating.



panel cut-out for enclosures, in mm



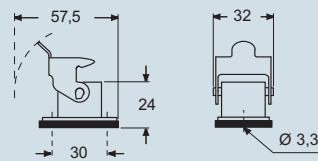
**CRUS** Type 12  
Type 4/4X only  
with CKR 65 (D)



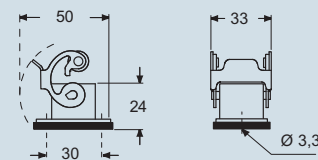
dimensions shown are not binding  
and may be changed without notice

dimensions in mm

CKA I

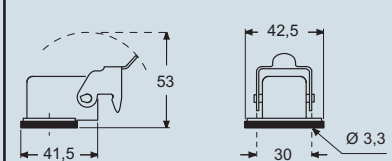


CKAX I

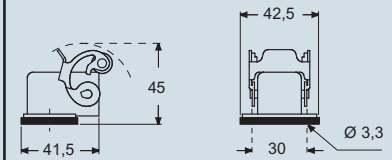


dimensions in mm

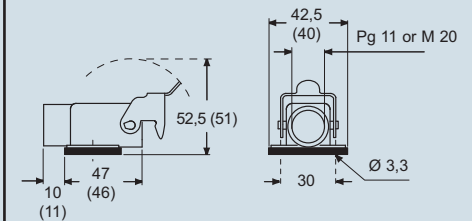
CKA IA



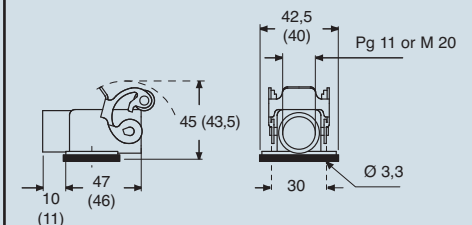
CKAX IA



CKA IAPS (CKA APS) and MKA IAP (MKA AP)



CKAX IAPS (CKAX APS) and MKAX IAP (MKAX AP)

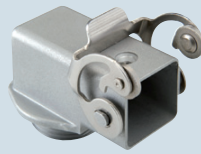




inserts:	page:
CK ..... 3 poles + ⊕	48
CK ..... 4 poles + ⊕	48
CKS ..... 3 poles + ⊕	49
CKS ..... 4 poles + ⊕	49
CD ..... 8 poles	54
CQ ..... 12 poles + ⊕	165
CQ ..... 5 poles + ⊕	166

insert dimensions:  
21 x 21 mm

angled bulkhead mounting housings



bulkhead mounting housings with self closing cover

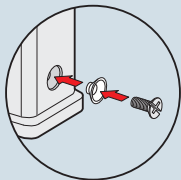


**NEW**

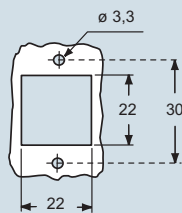
description	part No.	part No.
galvanized steel lever, M20 fixing thread (*) stainless steel lever, M20 fixing thread (*)	<b>MKA IAF20</b> 1) <b>MKAX IAF20</b> 1)	
galvanized steel lever, M25 fixing thread (*) stainless steel lever, M25 fixing thread (*)	<b>MKA IAF25</b> 1) <b>MKAX IAF25</b> 1)	
with galvanised steel lever, for female inserts with galvanised steel lever, for male inserts		<b>CKA 03 ILS</b> <b>CKA 03 ILSA</b>
with stainless steel lever, for female inserts with stainless steel lever, for male inserts		<b>CKAX 03 ILS</b> <b>CKAX 03 ILSA</b>
gasket and screw kit for IP66/IP67 1) for CK, CQ 05, CKS inserts	<b>CKR 65</b>	<b>CKR 65</b>
gasket and screw kit for IP66/IP67 1) for CD 07/08 inserts	<b>CKR 65 D</b>	<b>CKR 65 D</b>

(\*) locknut supplied on request, see catalogue cable glands (articles AS M20N and AS M25N metallic, AS M20L and AS M25L insulating)

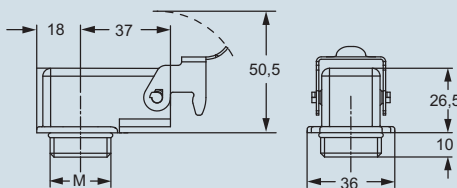
1) To obtain the protection rating IP66/IP67 a kit is provided that includes a gasket to fit under the insert fixing screws supplied with the kit (see illustrative example).  
CQ 12 inserts are already supplied with a gasket and screw which ensure IP66/IP67 protection rating.



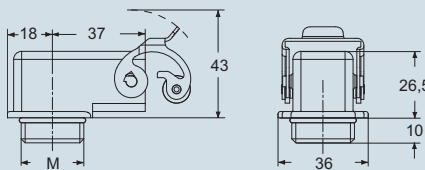
panel cut-out for enclosures CKA ILS/ILSA, in mm



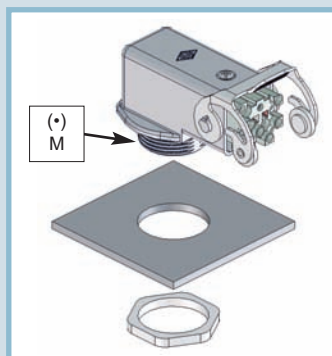
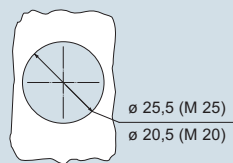
dimensions in mm  
**MKA IAF**



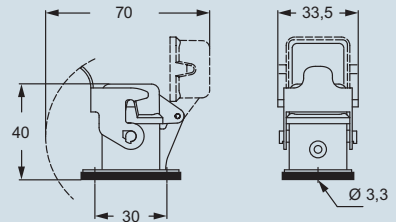
**MKAX IAF**



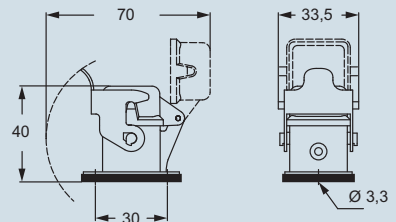
panel cut-out



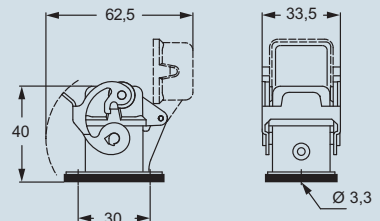
dimensions in mm  
**CKA ILS**



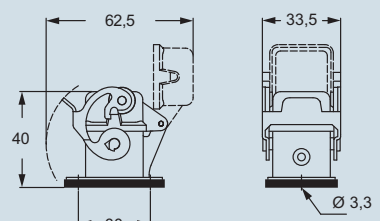
**CKA ILSA**



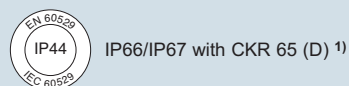
**CKAX ILS**



**CKAX ILSA**



**CRUS** Type 12  
Type 4/4X only  
with CKR 65 (D)



dimensions shown are not binding  
and may be changed without notice

C-TYPE - size 21.21



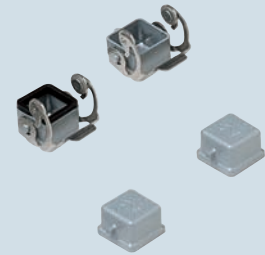
inserts:	page:
CK ..... 3 poles + ⊕	48
CK ..... 4 poles + ⊕	48
CKS ..... 3 poles + ⊕	49
CKS ..... 4 poles + ⊕	49
CD ..... 8 poles	54
CQ ..... 12 poles + ⊕	165
CQ ..... 5 poles + ⊕	166

insert dimensions:  
21 x 21 mm

hoods

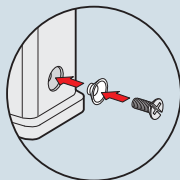


covers



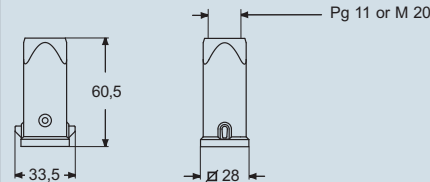
description	part No. (entry - Pg 11)	part No. (entry - M 20)	part No. (with eyelet)	part No. (with loop)
with pegs, top entry with pegs, side entry	<b>CKA 03 VS</b> <b>CKA 03 VAS</b>	<b>MKA V20</b> <b>MKA VA20</b>		
with galvanised steel lever, top entry with stainless steel lever, top entry	<b>CKA 03 VGS</b> <b>CKAX 03 VGS</b>	<b>MKA VG20</b> <b>MKAX VG20</b>		
with pegs and gasket, for female inserts with pegs, for male inserts			<b>CKA 03 C 1)</b> <b>CKA 03 CA 1)</b>	<b>CKA 03 CS 1)</b> <b>CKA 03 CAS 1)</b>
with stainless steel lever and gasket, for female inserts with stainless steel lever, for male inserts				<b>CKAX 03 CX</b> <b>CKAX 03 CXA</b>
gasket and screw kit for IP66/IP67 <sup>2)</sup> for CK, CQ 05, CKS inserts	<b>CKR 65</b>			
gasket and screw kit for IP66/IP67 <sup>2)</sup> for CD 08 inserts	<b>CKR 65 D</b>			

2) To obtain the protection rating IP66/IP67 a kit is provided that includes a gasket to fit under the insert fixing screws supplied with the kit (see illustrative example).  
CQ 12 inserts are already supplied with a gasket and screw which ensure IP66/IP67 protection rating.

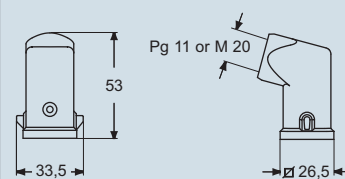


dimensions in mm

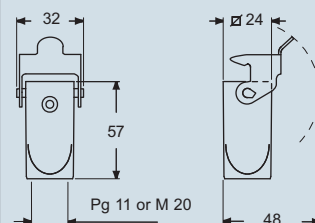
CKA VS and MKA V



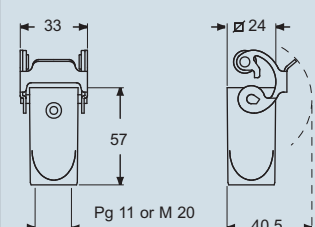
CKA VAS and MKA VA



CKA VGS and MKA VG



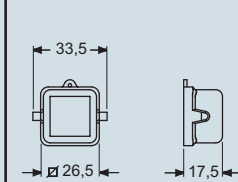
CKAX VGS and MKAX VG



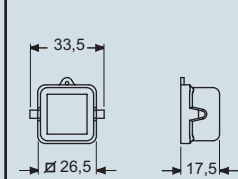
1) preferably be used with enclosures CKAX (stainless steel lever).

dimensions in mm

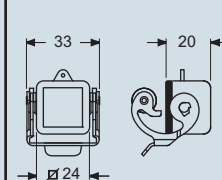
CKA C(S)



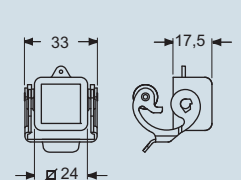
CKA CA(S)



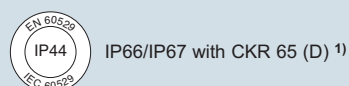
CKAX CX



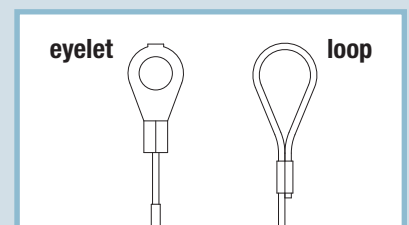
CKAX CXA



**CRUS**®  
Type 12  
Type 4/4X only  
with CKR 65 (D)



dimensions shown are not binding  
and may be changed without notice





inserts:	page:
<b>CK</b> ..... 3 poles + ⊕	48 *
<b>CK</b> ..... 4 poles + ⊕	48 *
<b>CKS</b> ..... 3 poles + ⊕	49 *
<b>CKS</b> ..... 4 poles + ⊕	49 *
<b>CD</b> ..... 8 poles	54 *
<b>CQ</b> ..... 12 poles + ⊕	165 *
<b>CQ</b> ..... 5 poles + ⊕	166 *
<b>CQ</b> ..... 3 poles + ⊕	23

\* refer to catalogue page CN.16

insert dimensions:  
21 x 21 mm

**hoods**



**NEW**

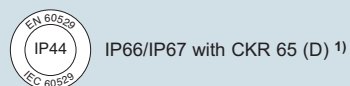
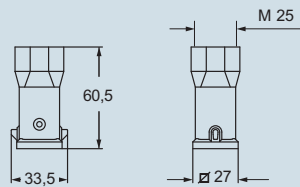
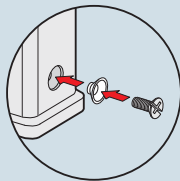
description	part No. (entry - M 25)
with pegs, top entry	<b>MKA V25</b>
gasket and screw kit for IP66/IP67 <sup>1)</sup> for CK, CQ 05, CKS inserts	<b>CKR 65</b>
gasket and screw kit for IP66/IP67 <sup>1)</sup> for CD 08 inserts	<b>CKR 65 D</b>



1) To obtain the protection rating IP66/IP67 a kit is provided that includes a gasket to fit under the insert fixing screws supplied with the kit (see illustrative example).  
CQ 12 inserts are already supplied with a gasket and screw which ensure IP66/IP67 protection rating.

dimensions in mm

**MKA V25**



dimensions shown are not binding  
and may be changed without notice