



Building Installation Connector System AC 166®

G
Distributor

AC 166 GVH 4/3 SW



1 input/3 outputs, H shaped, 3 pole, black, coding: 1 (mains), voltage rating: 250 V, current rating: 20 A

Order Info

reference number (ref. no.)	167463
PU	100
EAN	4028012137633

Type

type	1 input/3 outputs, H shaped
number of poles	3 pole
colour	black
coding	1 (mains)
PE function	yes
protection against incorrect plugging	yes
latch	yes

Technical Data

voltage rating	250 V
current rating	20 A
insulating material	PA 6.6
contact material	brass
impulse voltage rating	4.0 kV
flammability rating	V-2
IP code	IP20
IP code when plugged	IP40

Approvals

acc. to EN 61535	Download PDF
------------------	------------------------------

Accessories

AC 166 MA/ 3 SW	169784
-----------------	--------



Building Installation Connector System AC 166®

G
Distributor

AC 166 GVH 4/3 SW BL



1 input/3 outputs, H shaped, 3 pole, black, coding: 1 (mains), voltage rating: 250 V, current rating: 20 A

Order Info

reference number (ref. no.)	167463BL
PU	100
EAN	4028012137657

Type

type	1 input/3 outputs, H shaped
number of poles	3 pole
colour	black
coding	1 (mains)
PE function	yes
protection against incorrect plugging	yes
latch	yes

Technical Data

voltage rating	250 V
current rating	20 A
insulating material	PA 6.6
contact material	brass
impulse voltage rating	4.0 kV
flammability rating	V-2
IP code	IP20
IP code when plugged	IP40
fixing	screw

Approvals

acc. to EN 61535

[Download PDF](#)



Building Installation Connector System AC 166®

G
Distributor

AC 166 GVH 6/3 SW

1 input/5 outputs, H shaped, 3 pole, black, coding: 1 (mains), voltage rating: 250 V, current rating: 20 A



Order Info

reference number (ref. no.)	167663
PU	100
EAN	4028012137640

Type

type	1 input/5 outputs, H shaped
number of poles	3 pole
colour	black
coding	1 (mains)
PE function	yes
protection against incorrect plugging	yes
latch	yes

Technical Data

voltage rating	250 V
current rating	20 A
insulating material	PA 6.6
contact material	brass
impulse voltage rating	4.0 kV
flammability rating	V-2
max. Ambient Temperature Operation	100 °C
IP code	IP20
IP code when plugged	IP40

Approvals

acc. to EN 61535	Download PDF
-------------------------	------------------------------

Accessories

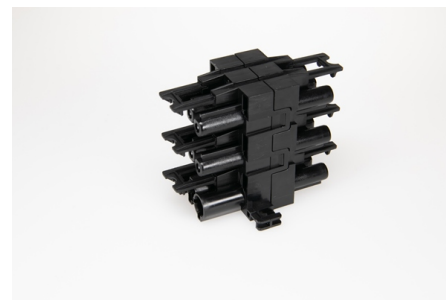
AC 166 MA/ 3 SW	169784
------------------------	--------



Building Installation Connector System AC 166®

G
Distributor

AC 166 GVH 6/3 SW BL



1 input/5 outputs, H shaped, 3 pole, black, coding: 1 (mains), voltage rating: 250 V, current rating: 20 A

Order Info

reference number (ref. no.)	167663BL
PU	100
EAN	4028012137664

Type

type	1 input/5 outputs, H shaped
number of poles	3 pole
colour	black
coding	1 (mains)
PE function	yes
protection against incorrect plugging	yes
latch	yes

Technical Data

voltage rating	250 V
current rating	20 A
insulating material	PA 6.6
contact material	brass
impulse voltage rating	4.0 kV
flammability rating	V-2
max. Ambient Temperature Operation	100 °C
IP code	IP20
IP code when plugged	IP40
fixing	screw

Approvals

acc. to EN 61535	Download PDF
------------------	------------------------------



Building Installation Connector System AC 166®

G
Distributor

AC 166 MA/ 3 SW

mounting adapter, black



Order Info

reference number (ref. no.)	169784
PU	100
EAN	4028012137671

Type

type	mounting adapter
colour	black

Technical Data

insulating material	PA 6.6
flammability rating	V-2
max. Ambient Temperature Operation	100 °C
mounting hole diameter	6.2/7.3 mm
fixing	screw